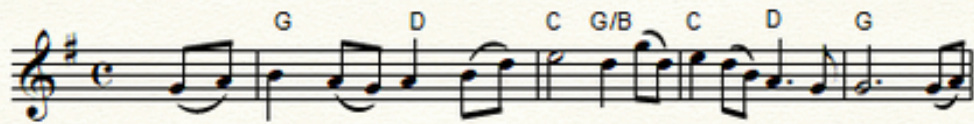


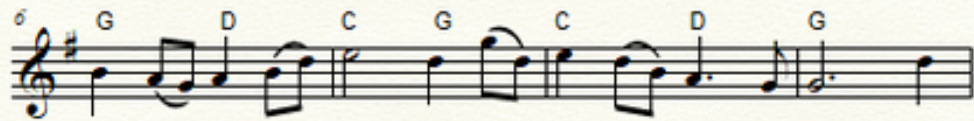
Down by the Salley Gardens

William Butler Yeats

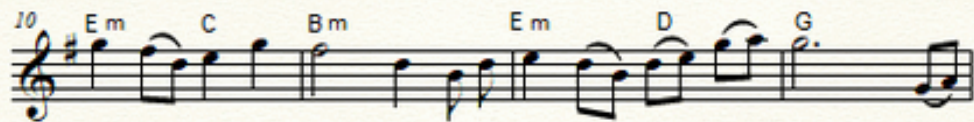
Tune adapted by Herbert Hughes



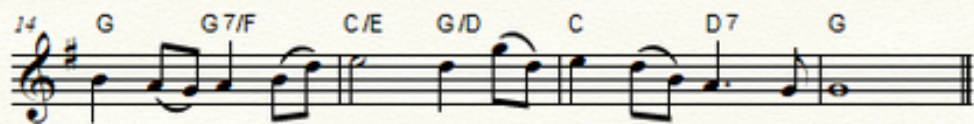
Down by the sal - ley gar - dens my love and I did meet. She



passed the sal - ley gar - dens with lit - tle snow-white feet. She



bid me take love ea - sy, as the leaves grow on the tree; But



I, being young and fool - ish, with her would not a - gree.

In a field by the river my love and I did stand,
And on my leaning shoulder she laid her snow-white hand.
She bid me take life easy, as the grass grows on the weirs;
But I was young and foolish, and now am full of tears.

Arrangement Copyright © 2018 Music-for-Music-Teachers.com
All Rights Reserved